



Management plan for Trunsö archipelago

Maija Mussaari

COASTNET LIFE (LIFE17/NAT/FI/000544)



Management plan

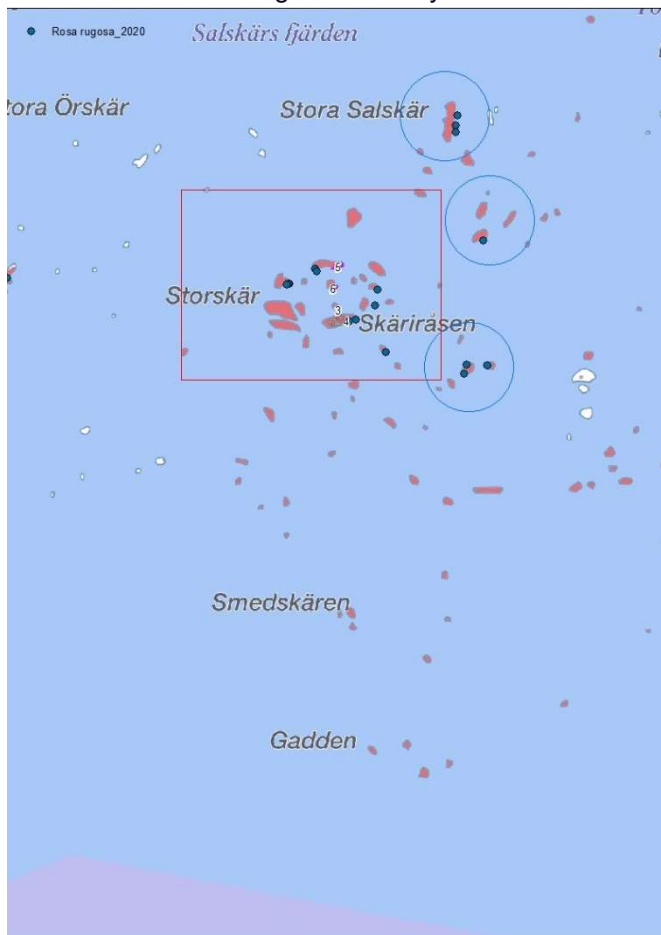
Trunsö is situated in the most outer archipelago, at south end of the Archipelago national park. The area consists of hundreds of islands and it is one of the most valuable bird sites at the NP. Human movement is restricted at the site. There was an indication that these islands are overgrowing slowly due to multiple environmental threats including climate change, eutrophication etc. This is true on many islands of the outer archipelago. However, inventories on Trunsö sub-archipelago showed that they are in good condition, and in many cases 1620 could be even classified as excellent (terrestrial part). Classification as excellent however could be done on many islands only after trash collecting and *Rosa rugosa* removal.

At Trunsö archipelago a group of 27+ islands was selected for management actions (red area, map 1). This tight group of islands has valuable bird fauna, *rosa rugosa* sites, species rich meadows and some low lying coastlines which collect trash from the sea on storms days. All the islands selected belong to the Natura2000- type 1620. Surface area of the biggest island is 13 hectare, and total hectares of all islands is around 60. Actions have already started with *rosa rugosa* removal by entrepreneur and trash collecting by kayak volunteers. Actions shall be finished on 2023 with the help of a volunteer camp. Trash collecting shall eventually be done on all the islands.

Actions in a nutshell

Due to the surprisingly good situation at the Trunsö islands management activities include mainly trash collecting but also some juniper clearing tests and *rosa rugosa* removal:

- Trash collecting. Most trashy sites are marked for future work.



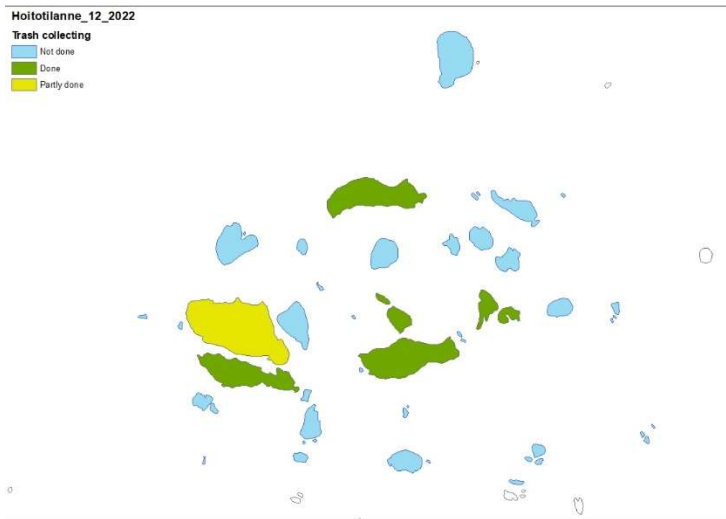
- Clearing all *possible* pines from all the islands (1-5 islands)
- *Rosa rugosa* removal from 10 sites (started 2020). Additional sites are marked blue (map 1), if the weather is extremely good at the time of the camp, also these should be removed.
- Testing: Enlarging small meadows by clearing junipers on min 2 islands (from 4 marked on the map)

Juniper clearing guidelines more detailed in finnish. Katajan raivauksen ohjeet suomeksi. Lisää ohjeita kuviokohtaisissa ohjeissa työkohteessa (CoastNET_LIFE_Trunsö_2023, 11083)

Raivataan katajapeitteeseen reikiä luoden lisää tilaa ketokasveille ja mahdollisesti myös pesiville linnuille. Niityn reunan korkeammat katajat jätetään pääsääntöisesti, tehdään reunalta käytäviä kuvion sisäosaan, johon tuotetaan reikiä. Tavoitteena on mosaiikkimainen katajan ja niityn kokonaisuus. Raivattavien laikkujen leveys vähintään 5 metriä, mutta reunat rikkonaisia. Raivaukset keskitetään eteläreunalle eli lähelle rantaa ja mahdollisuuksien mukaan niittyisiin ja kalkkivaikutteisiin kohtiin (ilmeisesti simpukkamaata). Raivattava alue on max 40% kuvion kokonaispeittävydestä. Kun maaperä muuttuu karuksi ja kallioiseksi/kiviseksi,

ei raivata.

Map 1: Trunsö archipelago on the map. Selected total management area is highlighted with red. Additional *rosa rugosa* sites with blue



Map 2 & 3: situation with trash collecting at 12.2022 and Rosa rugosa & juniper clearing sites on the map



Hamnkläppen, site for juniper clearing

Tämä toimenpidesuunnitelma on laadittu CoastNet-LIFE-hankkeessa EU-komission LIFE-rahoituksen tuella. Hanke on saanut rahoitusta Euroopan unionin LIFE-ohjelmasta. Aineiston sisältö heijastelee sen tekijöiden näkemyksiä, eikä Euroopan komissio tai CINEA ole vastuussa aineiston sisältämien tietojen käytöstä.