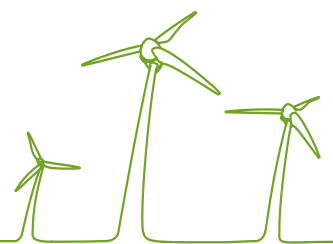
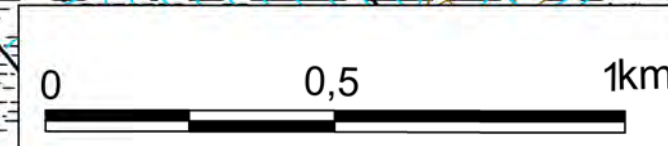
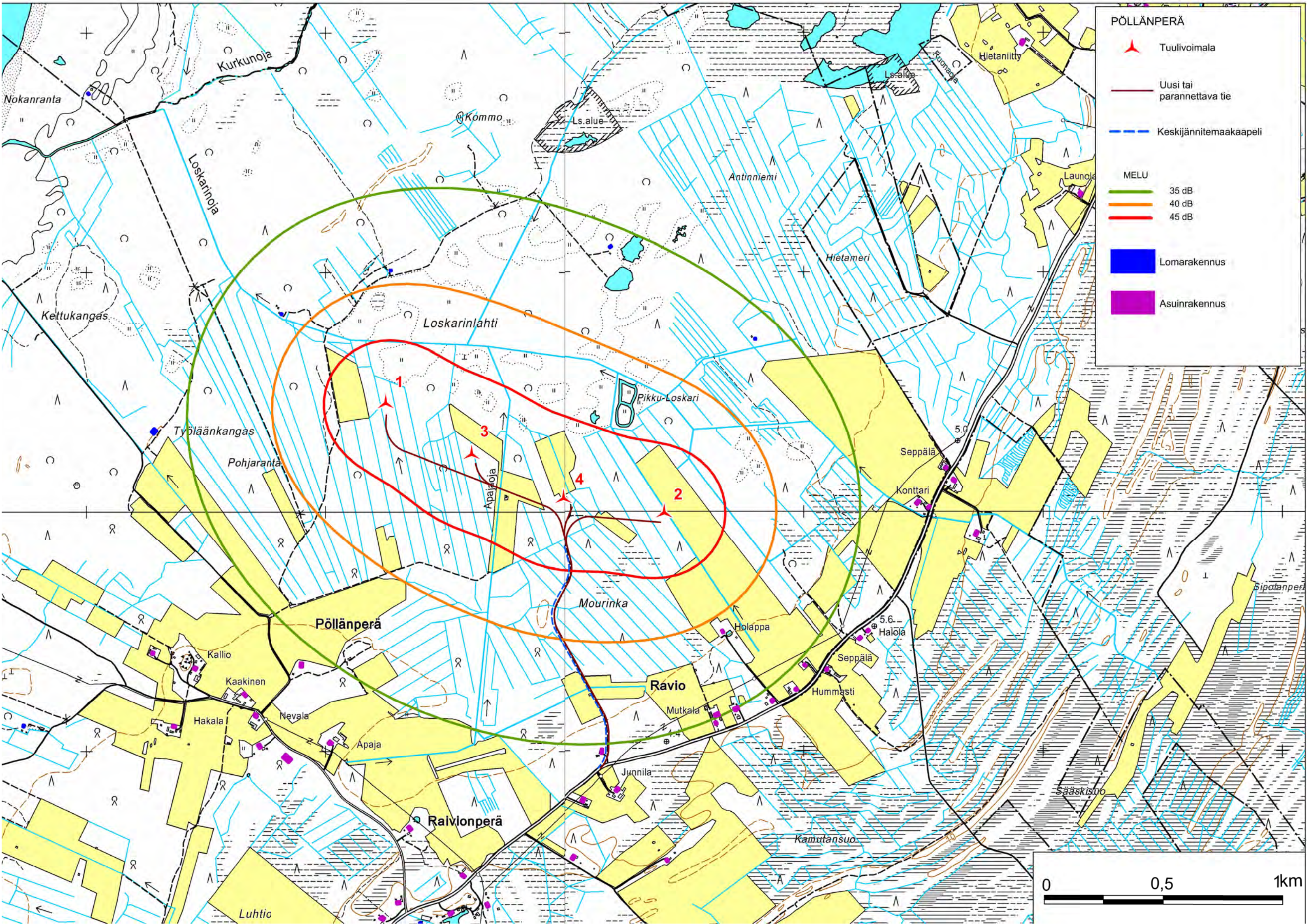


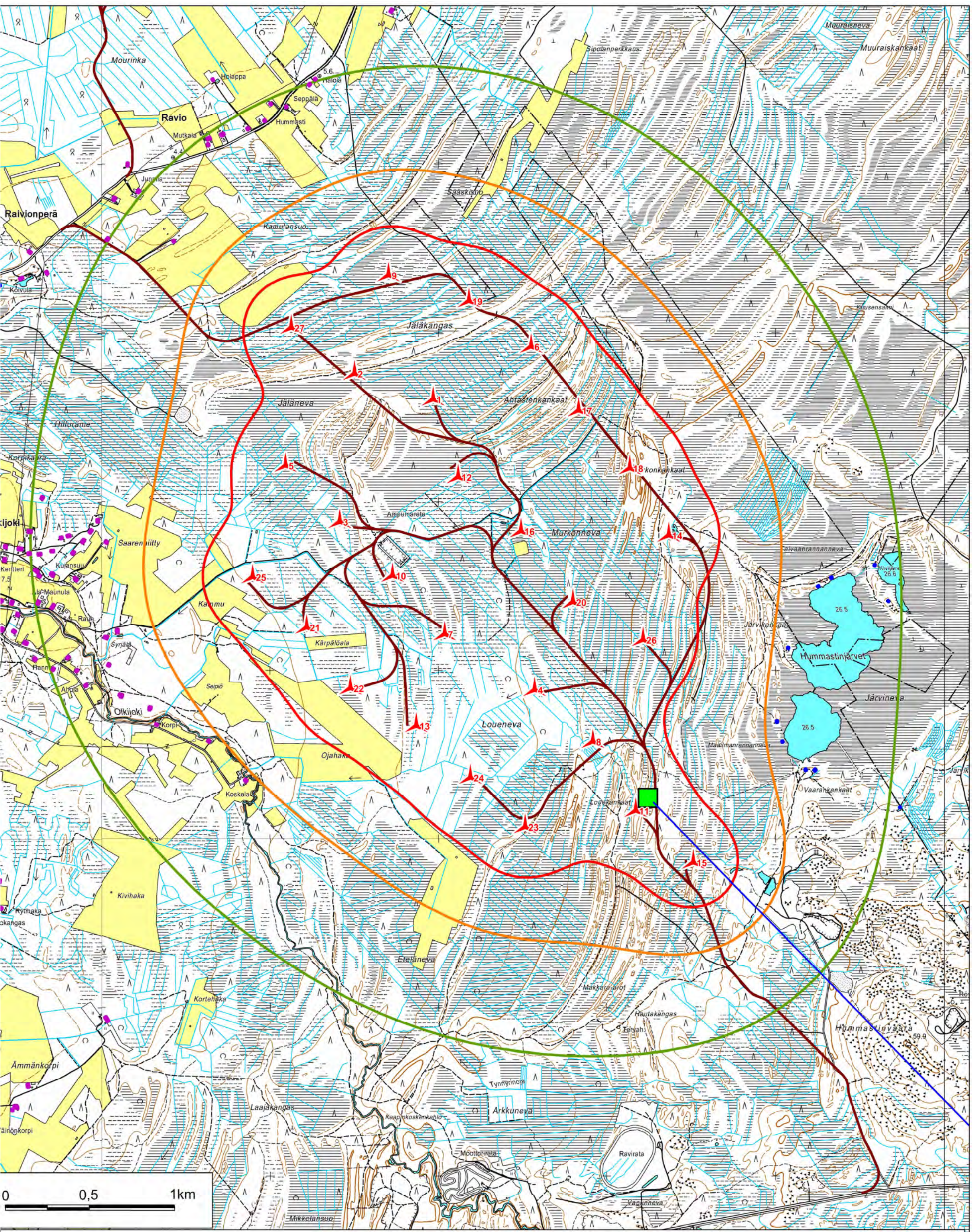
LIITE 7



PÖLLÄNPERÄ

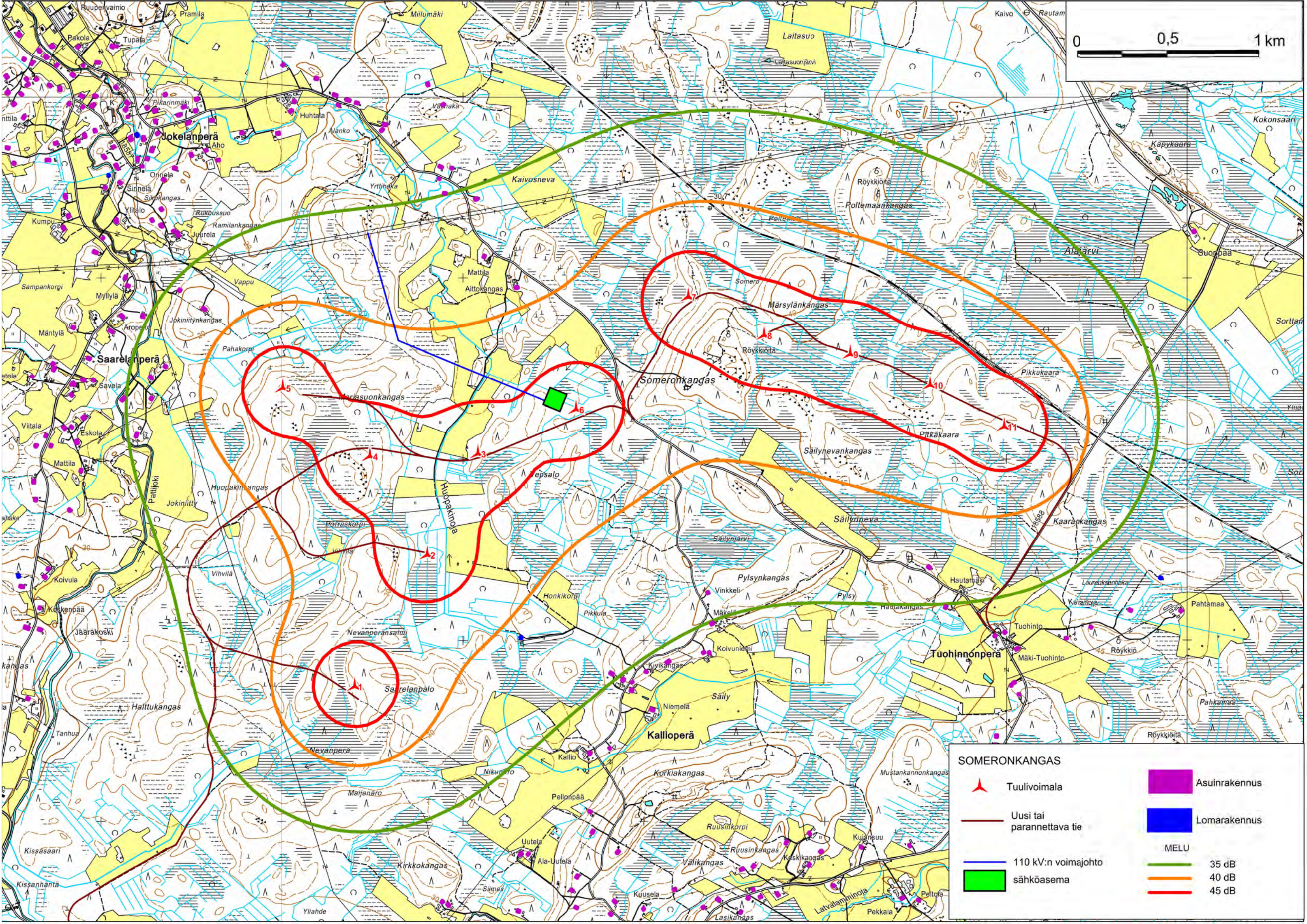
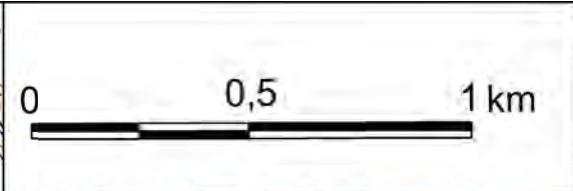
-  Tuulivoimala
-  Uusi tai parannettava tie
-  Keskijännitemaakaapeli
- MELU**
 -  35 dB
 -  40 dB
 -  45 dB
-  Lomarakennus
-  Asuinrakennus





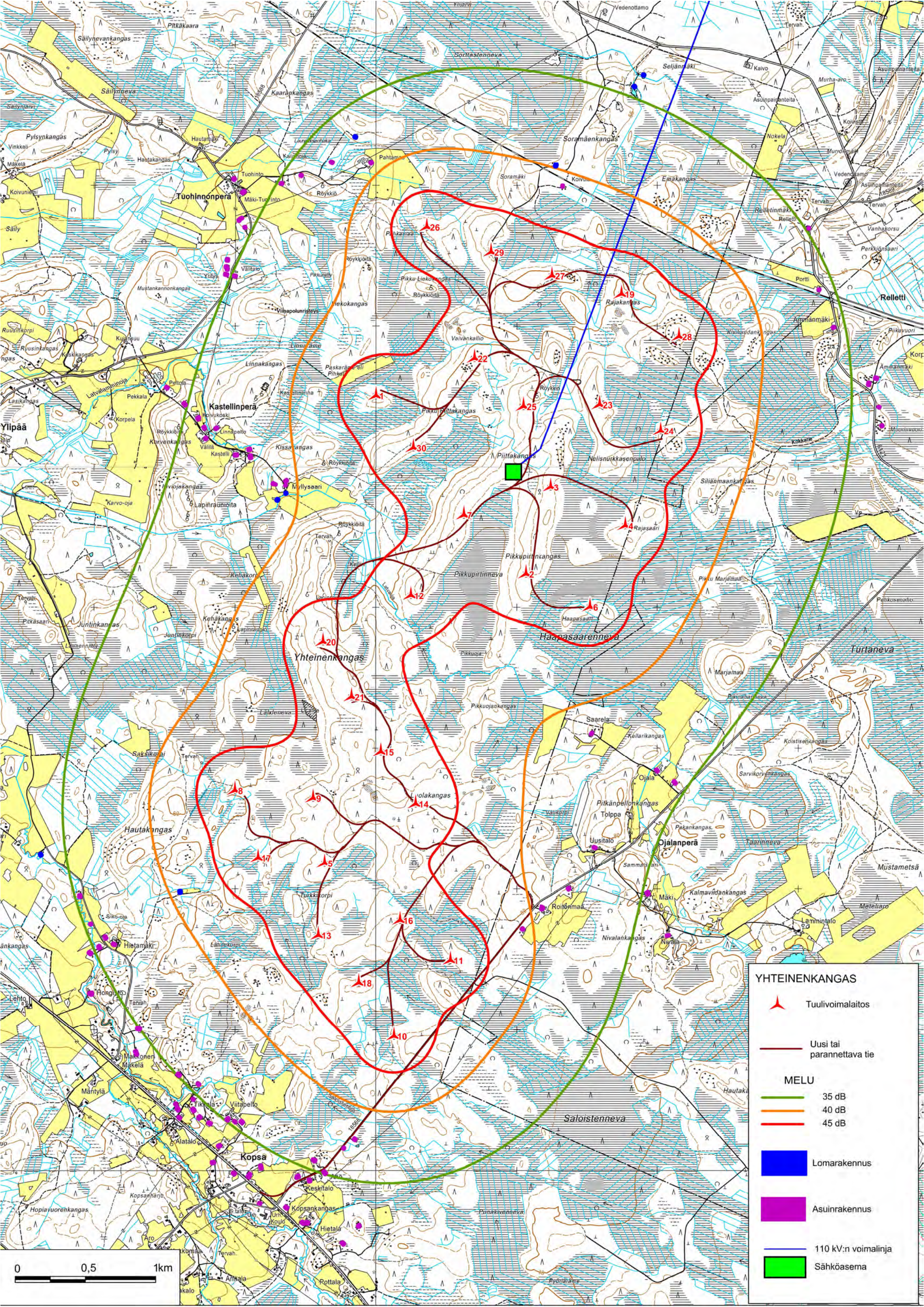
HUMMASTINVAARA

	Tuulivoimala		MELU		Lomarakennus		Asuinrakennus		110 kV:n voimajohto
	Uusi tai parannettava tie		35 dB						Sähköasema
			40 dB						
			45 dB						



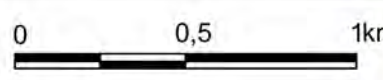
SOMERONKANGAS

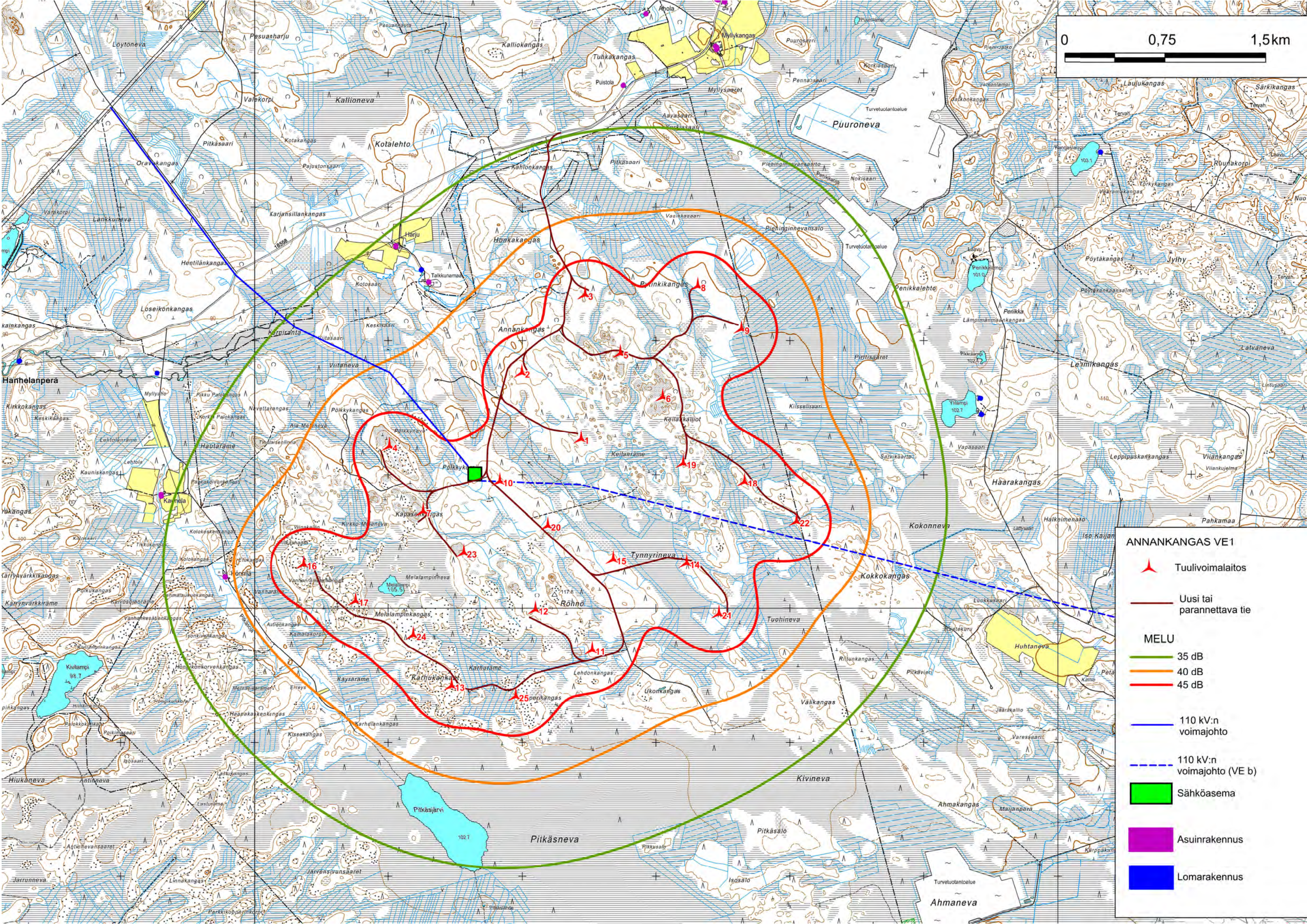
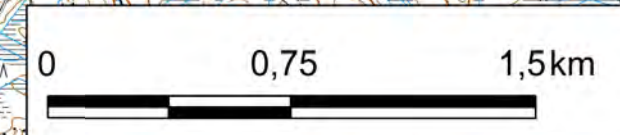
	Tuulivoimala		Asuinrakennus
	Uusi tai parannettava tie		Lomarakennus
	110 kV:n voimajohto		MELU 35 dB
	sähköasema		40 dB
			45 dB













YHTEINENKANGAS

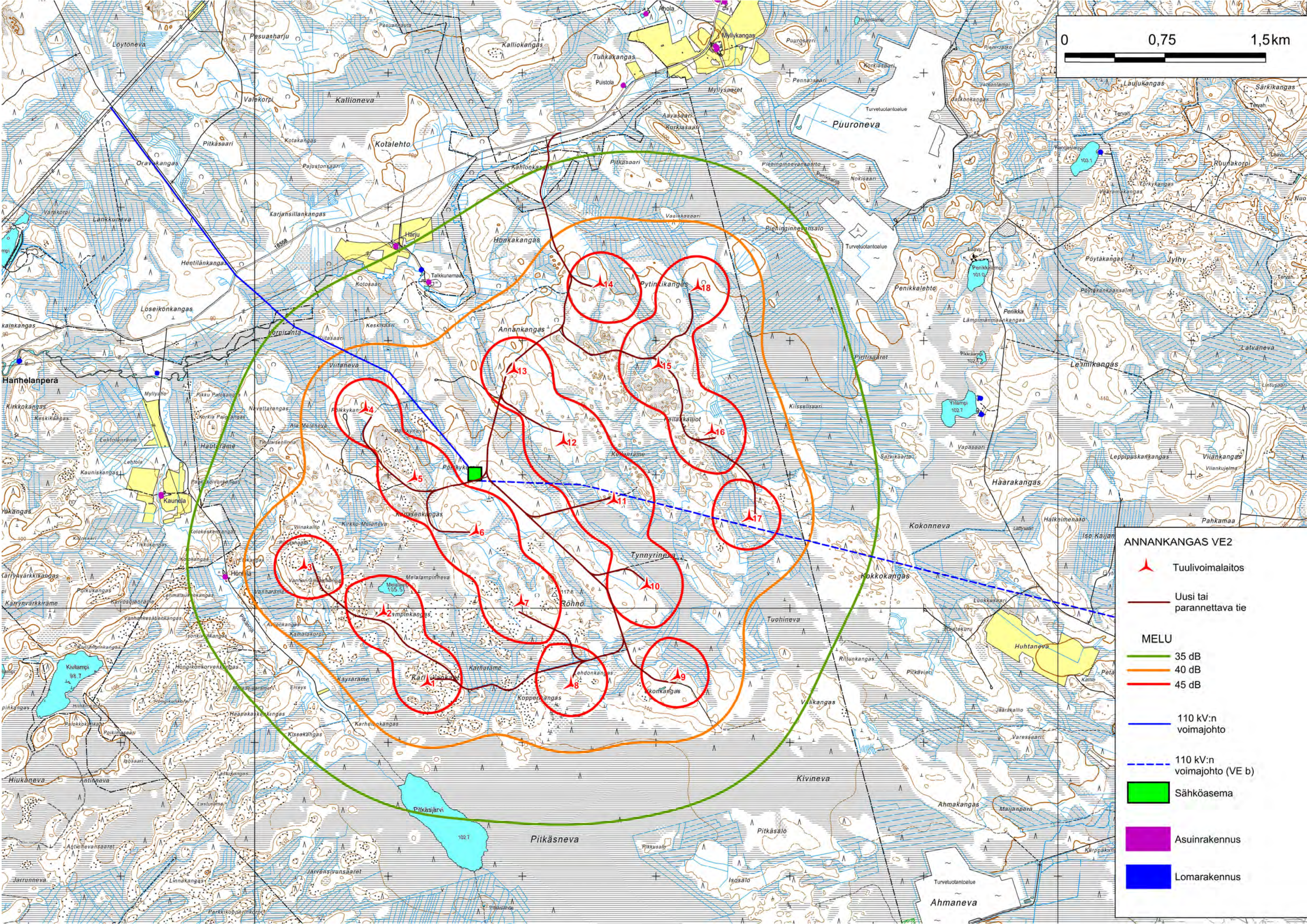
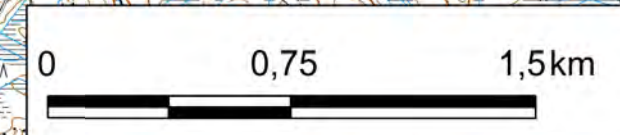
-  Tuulivoimalaitos
-  Uusi tai parannettava tie
- MELU**
-  35 dB
-  40 dB
-  45 dB
-  Lomarakenus
-  Asuinrakenus
-  110 kV:n voimalinja
-  Sähkösäema







ANNANKANGAS VE1




-  Tuulivoimalaitos
-  Uusi tai parannettava tie
- MELU**
-  35 dB
-  40 dB
-  45 dB
-  110 kV:n voimajohto
-  110 kV:n voimajohto (VE b)
-  Sähköasema
-  Asuinrakennus
-  Lomarakennus




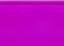



ANNANKANGAS VE2

-  Tuulivoimalaitos
-  Uusi tai parannettava tie

MELU

-  35 dB
-  40 dB
-  45 dB

-  110 kV:n voimajohto
-  110 kV:n voimajohto (VE b)
-  Sähköasema
-  Asuinrakennus
-  Lomarakennus

0 0,5 1km





NIKKARINKAARTO

-  Tuulivoimalaitos
-  Uusi tai parannettava tie

MELU

-  35 dB
-  40 dB
-  45 dB

-  110 kV:n voimajohto (VE a)

-  110 kV:n vcmajohto (VE b)

-  Sähköasema

-  Asuinrakennus

-  Lomarakennus